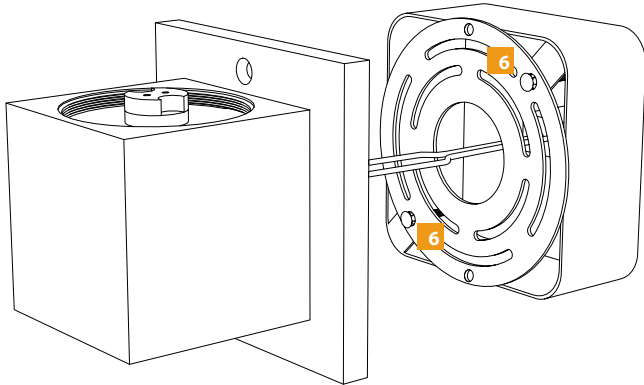


## Installation Instructions for Block Wall (WS014)

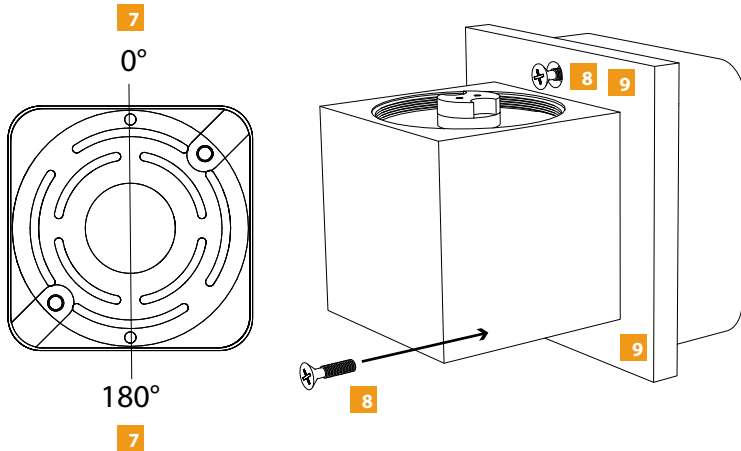
- 6** Attach universal Cross Bar with two short screws (included).



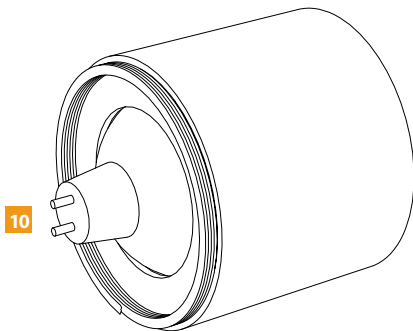
- 7** Orient Cross Bar with holes at 0° and 180° degrees.

- 8** Mount fixture with screws that were originally obscured by glass upon unpacking.

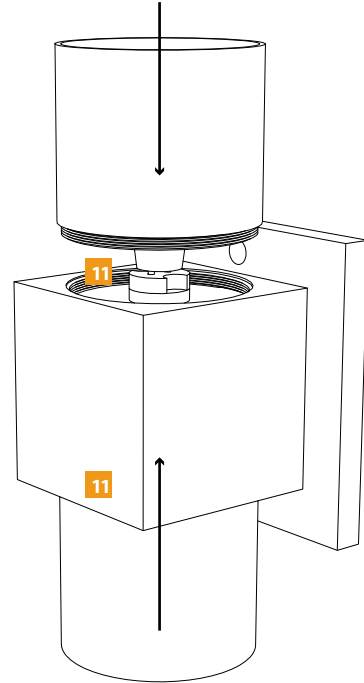
- 9** Tighten body till snug



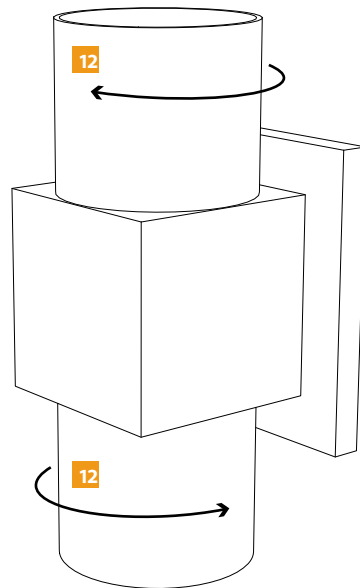
- 10 IMPORTANT:**  
**BULBS TO BE INSERTED INTO GLASS END AND BULB PINS SEATED COMPLETELY INTO LAMPHOLDER BEFORE SCREWING GLASS BACK IN PLACE.**



- 11** Install the diffuser over the bulb, be careful not to cross thread.



- 12** Gently screw glass back in clockwise until fully seated.



- 13** Power Luminaire.

SAVE THIS INSTRUCTIONS